

amani

BY RENSON

amani
BY RENSON



amani

Peace | piːs

noun [*mass noun*]

Freedom from disturbance; tranquility: peace refers to a state of freedom from disturbance and a sense of tranquility. It encompasses mental or emotional calm and the absence of worry. Experience the peace of mind this product will provide you



About Amani

Pure comfort, architectural design and innovative engineering: Amani is designed from the heart. Dare to think differently. After all, that's what your new outdoor space is designed for. A customized blend of luxury and serenity that offers you an immersive space to unwind and to enjoy outdoor living to the fullest. However and whenever you like.



1

Comfort

Amani embodies the essence of comfort, where nature's embrace rejuvenates and inspires. It offers you a modern and luxurious outdoor space, where you'll find the peace of mind you've been seeking. All year round.



A perfect place to unwind.





2

Design

Where modern design meets timeless beauty, Amani emerges. A vision of serenity and harmony, crafted with passion and precision.

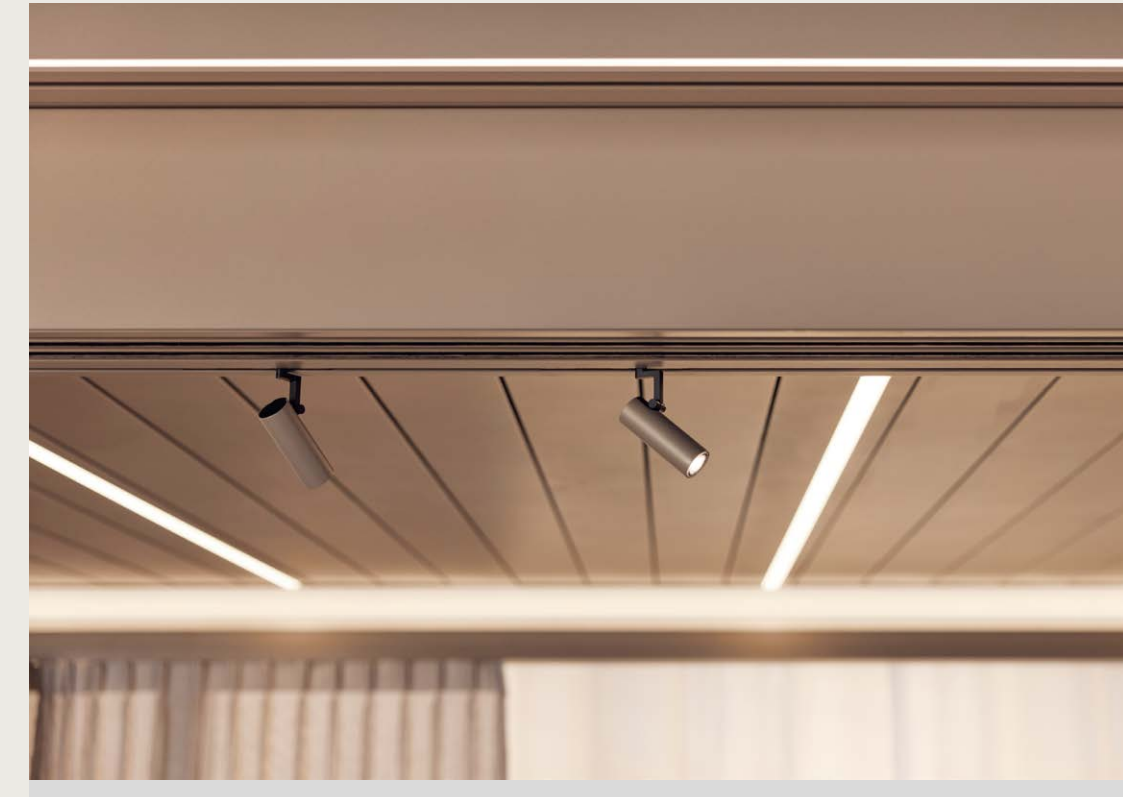


Pure comfort, visual harmony
and intelligent engineering ...
designed from the heart





Amani is your personalised architectural masterpiece. Customize the placement of columns and add overhangs as stylish awnings. **Experiment with shapes, lines, and structures to create a space that's uniquely yours.**



The right lighting transforms your outdoor space into something truly magical. **A blend of architectural, mood, and focus lighting**, creates a space that is both inviting and functional.



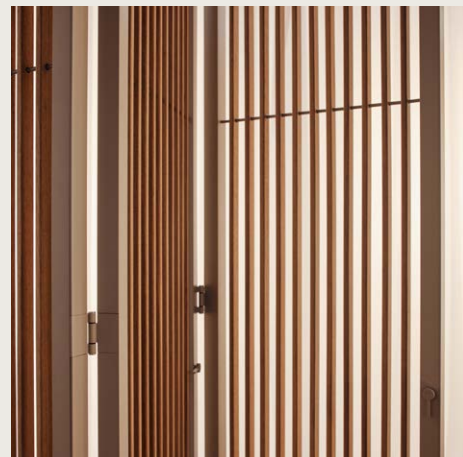
Elegance sets Amani apart. **Wall coverings, folding and sliding panels that glide past the beam to the edge of the roof** contribute to a harmonious space.



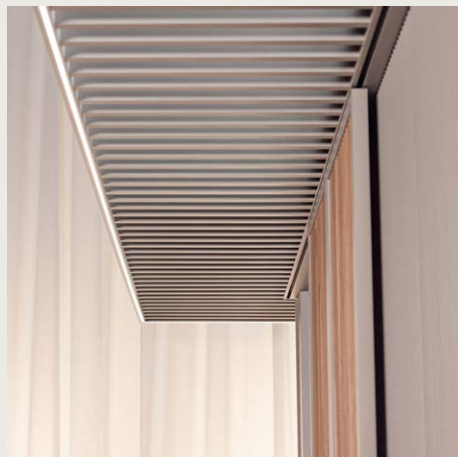
The Amani roof structure offers up to **four options per side**. Choose from screens, curtains, wall coverings, folding and sliding panels to create your perfect space.



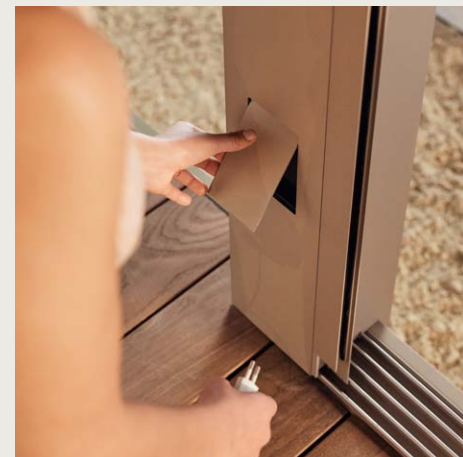
Screens



Folding panels



Awnings



Built-in outlet



Fixed Linarte wall



Heating in fixed blade





Design styles

Everyone has their own style. When it comes to outdoor living, nature and architecture prefer to blend seamlessly, blurring the boundaries between indoors and outdoors. As source of inspiration, Renson has developed six styles of outdoor living, with perfectly matched colors, materials, and textures. These styles combine pure comfort with both functional and aesthetic value.



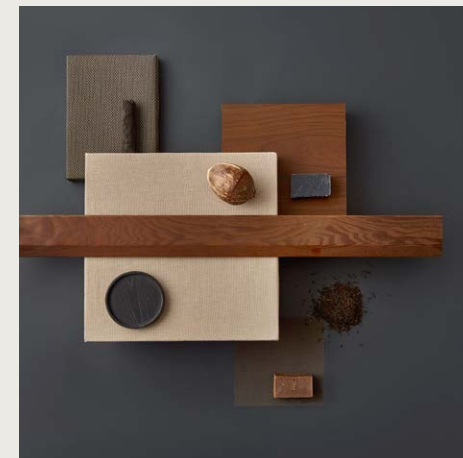
Limestone, sand and natural white tones and textures to create an airy atmosphere: **Pure Essence.**



A refreshing and timeless look with Italian touches for maximum enjoyment: **Idyllic Garden.**



Sleek minimalism that seamlessly blurs the boundaries between indoors and outdoors: **Crystal Lounge.**



A minimalist style with a dark color palette, inspired by traditional Japanese architecture: **Spiritual Harmony.**



Warm, southern colors, textures and materials for an instant summer feeling: **Earth Oasis.**

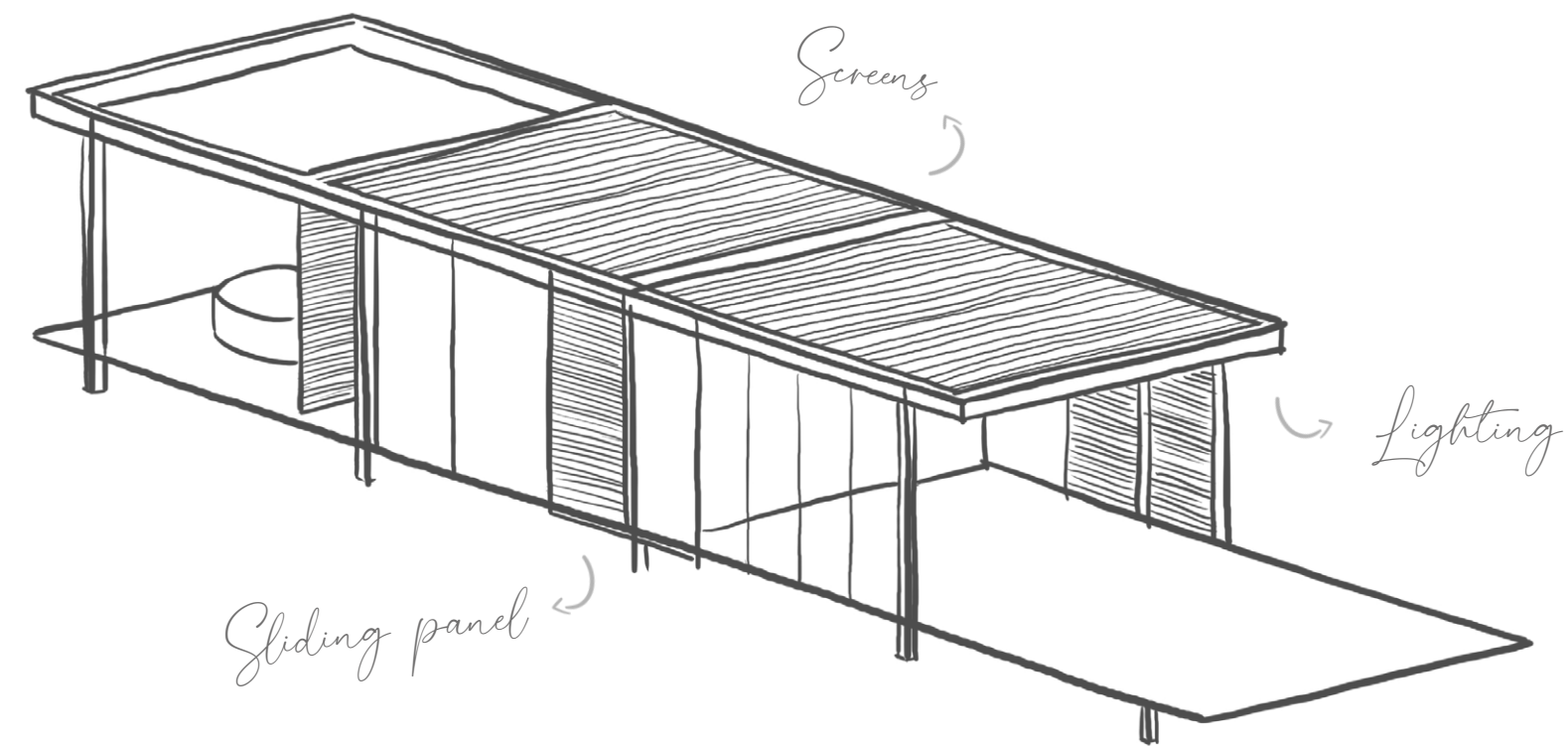


Radically contemporary and youthful, with a warm undertone of dynamic, playful colors: **Tech Cocoon.**

3

Engineering

Amani is born at the intersection of passion and creativity. Through continuous development, it pushes the boundaries of individual outdoor spaces design, offering endless possibilities for configuring your personal space.

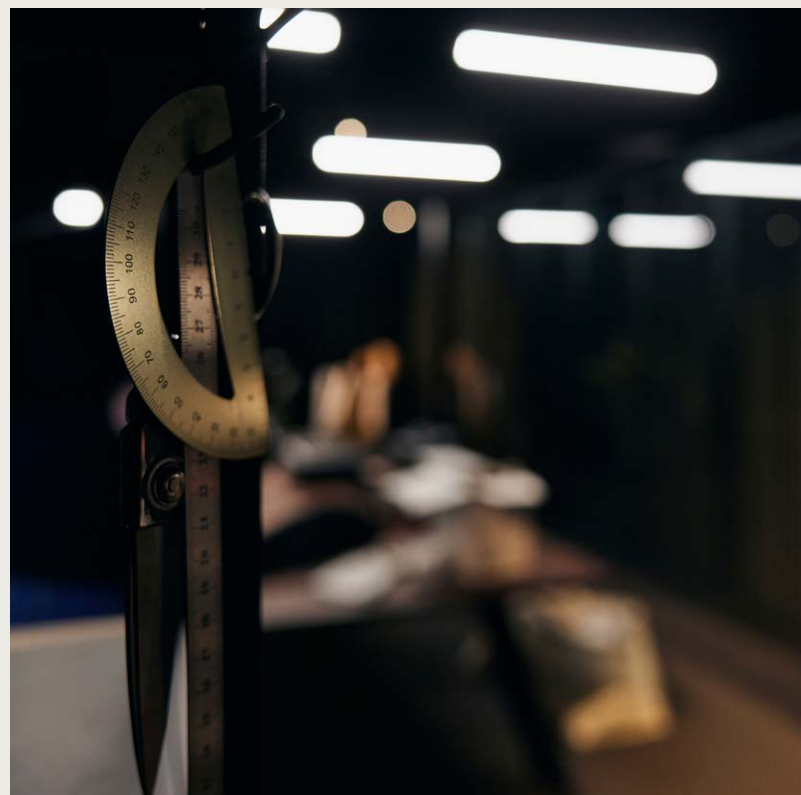






Crafted with passion, refined with precision.





Intelligent engineering since 1909

Reinforced columns allow endless personalization.

The Amani **3D configurator** brings every idea to life.

Automated customisation thanks to sophisticated ordering and production.

Amani withstands the **power of nature** with ease.

Subject to the strictest quality requirements and **wind tests**.

100% weather-resistant roof blades.

Sustainability first: fully recyclable.



Let Amani nurture your soul. Be yourself, relax,
find inner peace in pure comfort and serenity.







At **Renson** we believe that high-quality products and innovative solutions contribute to an energy-efficient, comfortable and healthy life, both indoors and outdoors. As a Belgian family business, we collaborate with an extensive network of professional specialists to achieve this ambition. Our core principles are intelligent engineering, high-end design, and ease of use.

Our extensive network of well-trained Ambassadors worldwide ensures that our high-quality products are installed professionally. **Renson Premium Ambassadors** bring years of experience in selling and installing Renson products. They offer the full range of products and guarantee the best possible professional service. **Renson Ambassadors** are happy to welcome you to their showroom and ensure a professional installation and providing after-sales service for your outdoor living space.

Find your Renson Amani dealer:



www.renson.net/amani

All photos shown are solely for illustration purposes and are a snapshot of the usage situation. The actual product may vary due to product modifications. Renson reserves the right to make technical changes to the products shown. You can download the most recent brochures at www.renson.net

